



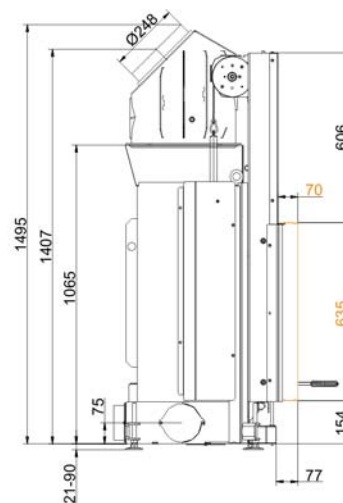
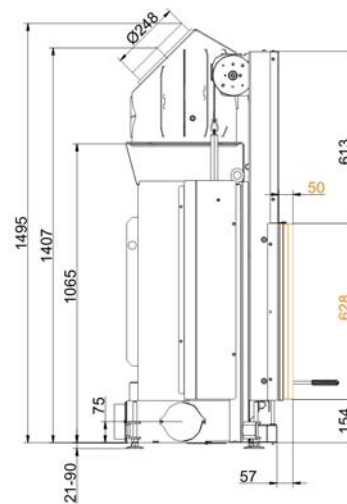
Stil-Kamin 62/76 lifting doors (easy-lift)

State: 05.02.2014



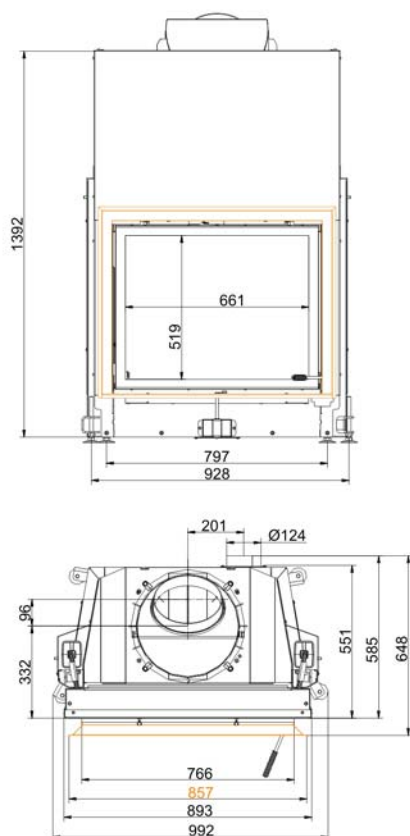
BRUNNER[®]
made in germany

Dimension sheet | **Stil-Kamin 62/76 lifting doors (easy-lift)**

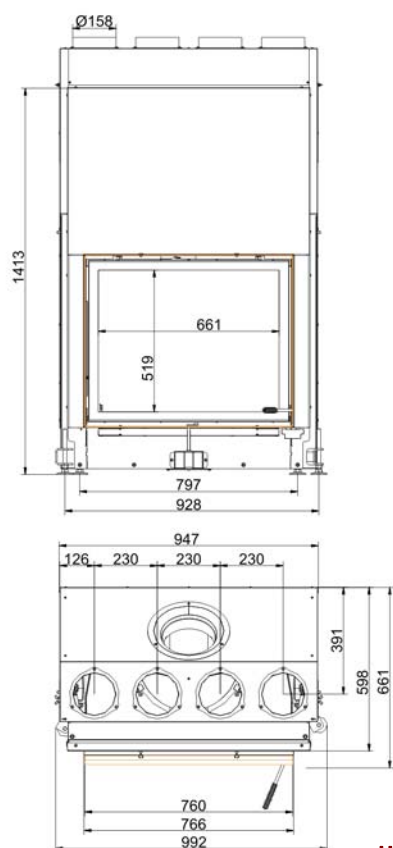


We suggest for CAD planing Palette CAD. Permanent updated drawings: www.brunner.de
Frames / front versions are marked colored.

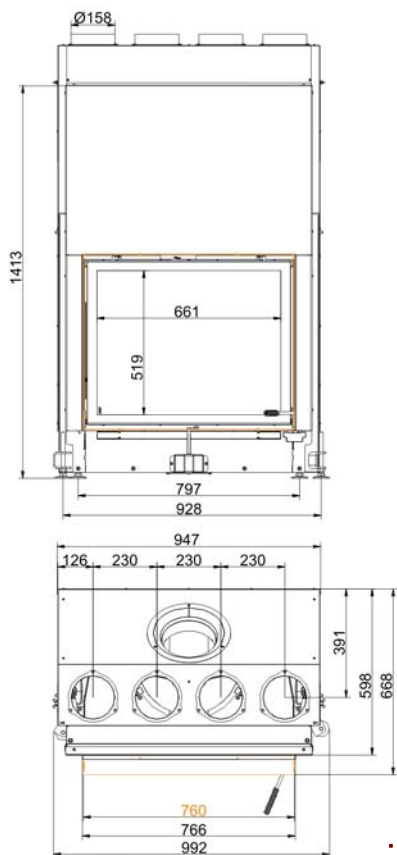
Dimension sheet | **Stil-Kamin 62/76 lifting doors (easy-lift)**



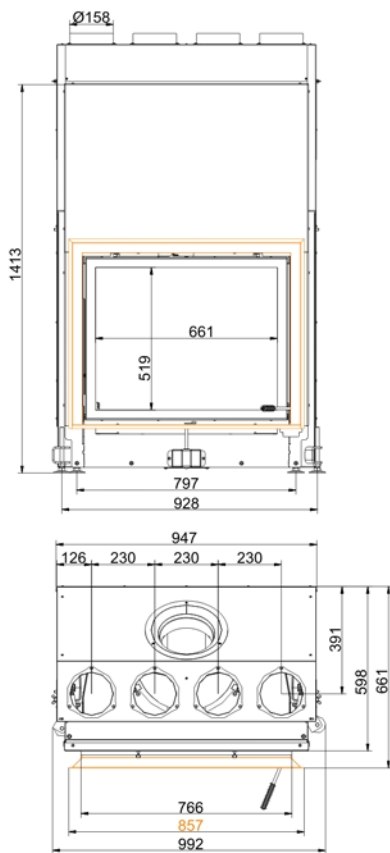
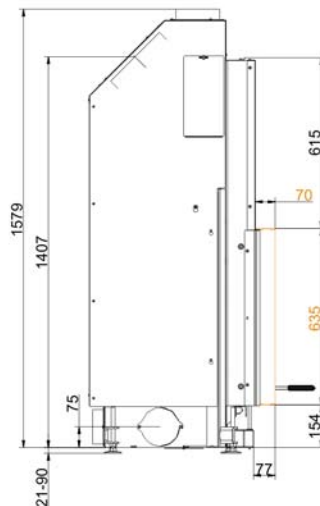
... with door frame



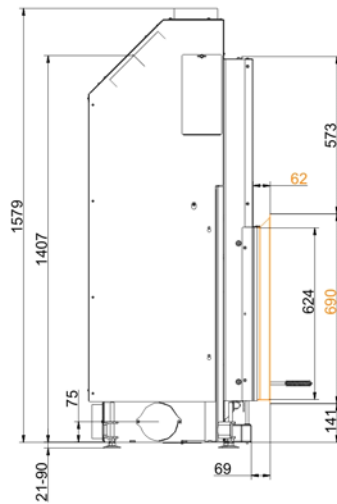
... with mounting frame 50 mm and convection cladding



... with mouting frame 70 mm and convection cladding



... with frame and convection cladding



Planning and installation

Stil-Kamin 62/76

Tested according to	EN 13229 W	EN 13229 W
Values measured at	nominal load	open door
Suitable for all construction types according to rules	OK	OK
Data for functional demonstration		
Rated heat power	kW	10,5
Firewood consumption	kg/h	3,2
Combustion performance	kW	12,5
Flue gas mass flow	g/s	10
Outlet temperature (before heating surface)	°C	325
Flue gas temperature after		
attached steel smoke hood	°C	200
1 x adjoining cast iron radiator (GNF10)	°C	135
6 x accumulation rings (MAS) ¹⁾	°C	205
adjoining ceramic accumulator ²⁾	°C	-
accumulation stones (MSS)	°C	-
water boiler	°C	-
Necessary supply pressure	Pa	12
Combustion air consumption	m³/h	35
Combustion air connection Ø	mm	125
Heat distribution		
Insert / heating surface	%	60 / -
Glass (single / double)	%	40 / -
Boiler	%	-
Cross-section of gratings for max. warm air power		
Supply air	cm²	1500
Warm air	cm²	1500
Minimal oven surface for closed construction type		
Surface giving off heat	m²	4,5
Space inside oven chamber without / with convection cladding ⁴⁾		
Distance to oven chamber wall	cm	8 / 3
Distance to floor	cm	-
Heat insulation without / with ³⁾ air gratings / with convection cladding ⁴⁾		
Wall	cm	18 / 14
Floor	cm	4 / 2
Ceiling	cm	22 / 16
Insulation of additional fire door DHT	cm	-
Brick lining of protected walls	cm	10
Weight		
Fireplace + burning chamber	kg	202 + 104
meets requirement limit values for		
Germany / Austria / Switzerland / Norway	1.BImSchV (Stufe 2) / 15a BVG / LRV / NS 3059	

1) Throttle flap recommended

2) Approximate value, must be calculated eventually

3) Values with air gratings, stove casing is heat conducting

4) at thermal insulation with ventilation (see assembly instructions)

Ulrich Brunner GmbH
 Zellhuber Ring 17 -18
 D-84307 Eggenfelden
 Phone: +49 / (0)87 21 / 7 71-0
 Fax: +49 / (0)87 21 / 7 71-100
 info@brunner.eu | www.brunner.eu

BRUNNER®

BRUNNER products are offered and sold only by qualified dealers and service centres.
 Subject to technical and assortment changes. Errors excepted. (02/14)